

MODEL: GS-TAQ2436

HORIZONTAL ROLLER HEARTH FLAT GLASS TEMPERING FURNACE (FORCE CONVECTION) EQUIPMENT DATA



EQUIPMENT DATA

1. Technical data

Specification of glass:

Item	Data	Remark
Glass thickness	4-19mm	
Max. size	2440 x1830mm—4mm 2440 x3660mm—5-19mm	Half Quench Full Quench
Min. size	100x300mm	
Finished product rate	≥98%	
Glass quality	International standard	Flatness ≤0.2%
Power consumption	≤4°C/m ² —5mm	
Output	18-20L/H—4mm 15-17L/H—5mm 12-14L/H—6mm 9-11L/H—8mm 7-9L/H—10mm 6-7L/H—12mm 5-6L/H—15mm 3-4L/H—19mm	The output will be more or less because of the different size, origin and color of the glass. Bigger output with smaller glass size , deep color
Request of raw glass sheet	High quality float glass without bladder , <u>sundries</u> ; glass is after chamfering , edging , washing and drying	

Total power

Item	Data	Remark
Heating power	562kW	
Blower power	250KW	Converter included
Ceramic roller	Dia.85x49	
Heating blower	3*4KW	
Other	28kW	

Transformer	630kVA	Not included
Air compressor	7kg/cm ² , 1m ³ /min	Not included

2.Main parts:

Mechanical parts

No.	Description	Supplier
01	Ceramic roller	Kamroller or Huayan
02	Ceramic roller drive belt	Shanghai
03	Insulating material (high aluminum insulating board)	Shandong
04	Fiber rope	Shanghai
05	Blower	Wendeng
06	Cycloid reducer	Anhui
07	Turbine worm reducer	Hangzhou or Changzhou
08	Pneumatic element	Aikes , Airtac
09	Bearing	Harbin, Luoyang , Wafang dian
10	Type steel	Wuhan Iron& Steel plant
11	Heaters	Capital Iron& Steel plant
12	Rubber roller	China Top Brand
13	Chain	China Top Brand

Electric parts:

No.	English Name	Models	Brands
1	Power module	PM1207	Siemens
2	PLC	CPU1215C	Siemens
3	Communication board	CB1241	Siemens
4	I/o extension module	SM1223	Siemens
5	Output extension module	SM1222	Siemens
6	Analog output	SM1232	Siemens
7.1	Blower frequency converter	MD290	Inovance
7.2	Transmission frequency converter	ATV320	Schneider/Siemens

8	Solid state relay	SAM120A	Gute,Wuxi
9	fuse	RS31	Mingrong,Zhejiang
10	Fuse base	Customized	Mingrong,Zhejiang
11	Temperature measuring module	M-7018-16-K	Hongge,Taiwan
12	Switching power supply	ABL-2M65H	Schneider
13	encoder	BES38-600	BANNER,USA
14	Proximity switch	BB-C11P2	Bedook
15	temperature-controlled meter	XMT804	WINPARK
16	pressure transmitter	FD80C	Fred
17	optoelectronic switch	Q20	BANNER,USA
18	button	ZB2BA	Schneider
19	Motor protection circuit breaker	GV2ME	Schneider
20	Scram knob	2B2BS44C	Schneider
21	2 gear knob	2B2BD2C	Schneider
22	Contact base	2B2B2101C	Schneider
23	breaker	1C65	Schneider
24	auxiliary contact	GVE11	Schneider
25	Ac contactor	LCID	Schneider
26	Intermediate relay	DRM270C	Weidmuller
27	Intermediate relay base	FSECO	Weidmuller
28	Industrial PC	IPC3000	Siemens
29	display	223V5L	PHILIPS
30	Mouse Keyboard	USB	Duble Swallow

Flat Glass Tempering Machine

Introduction

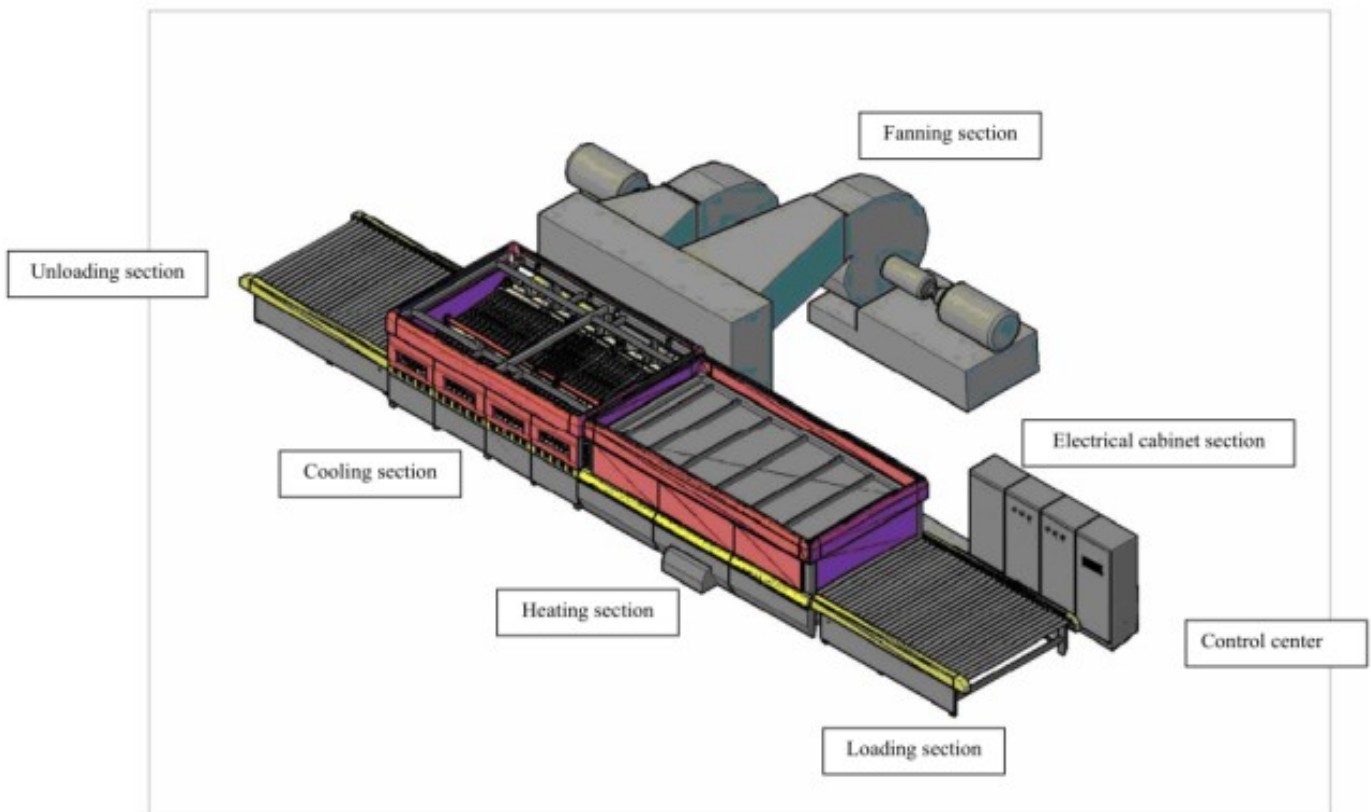
Machine Supply Scope: Split type (suitable for the container shipping)

TEL NO: 06-7433909, P.O. BOX: 15442, AL JURF 1, AJMAN – U.A.E.

E MAIL: sangeo.george@gmail.com, enquires@sangeogroup.com, Web: www.sangeogroup.com

Item	NAME
01	Loading Section
02	Heating Section with its details parts
03	Flat Quenching/Cooling Section with its details parts
04	Unloading Section
05	Blower System with its details parts
06	Electric Control Cabinets with its details parts
07	Spare Parts

Note: After loading, we will send the details packing list in each containers to buyer.

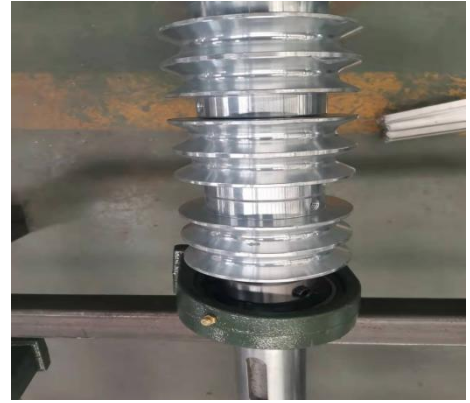


Item	Each Part Name	True Photos Show
1	<p>Loading Section: High Quality Rubber Rollers and Metal Rollers</p>	

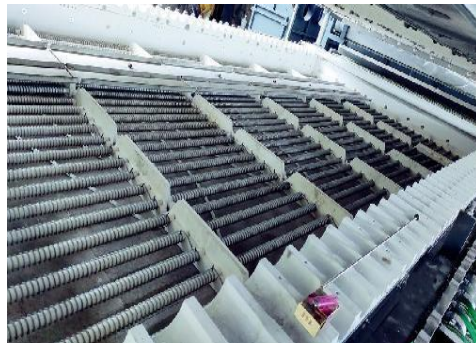


2 Heating Section:
Double Belt





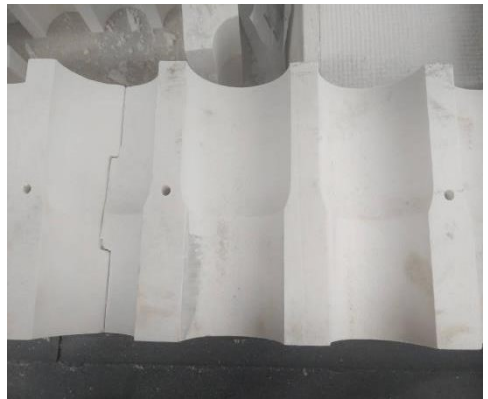
Heating Wires



Ceramic Rollers

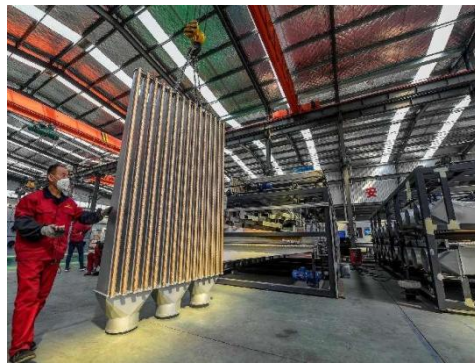
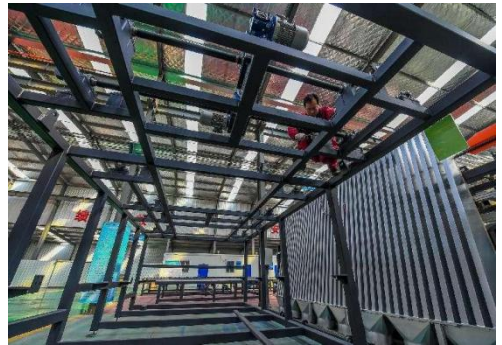
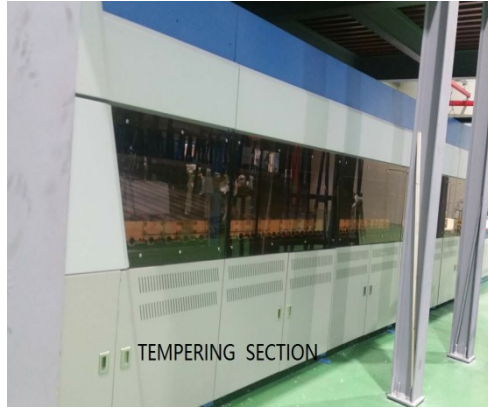


Insulation material



3

**Flat
Tempering Section**



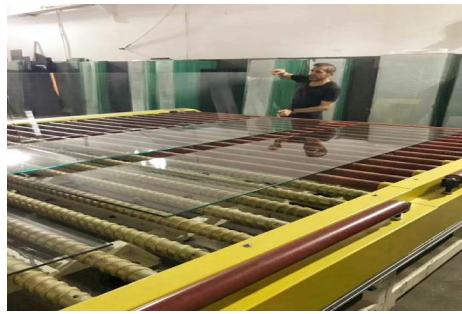


4 **Blower system:**
Blower+Air
Collection Box

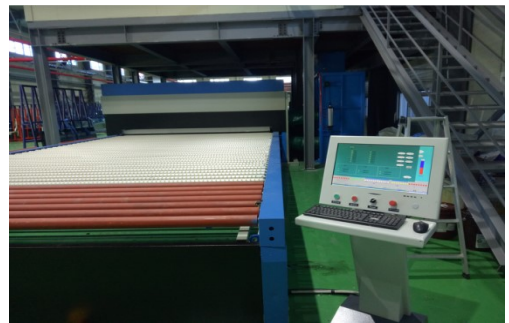
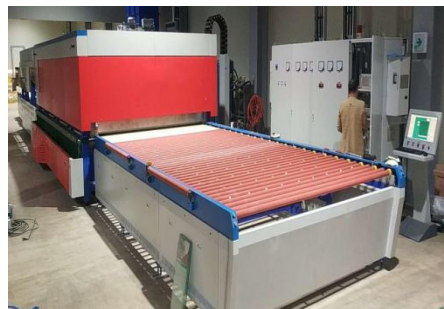
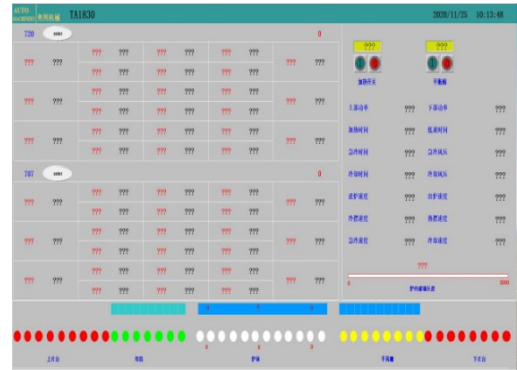


6 **Unloading Section**





7
**Siemens
PLC
Control System**



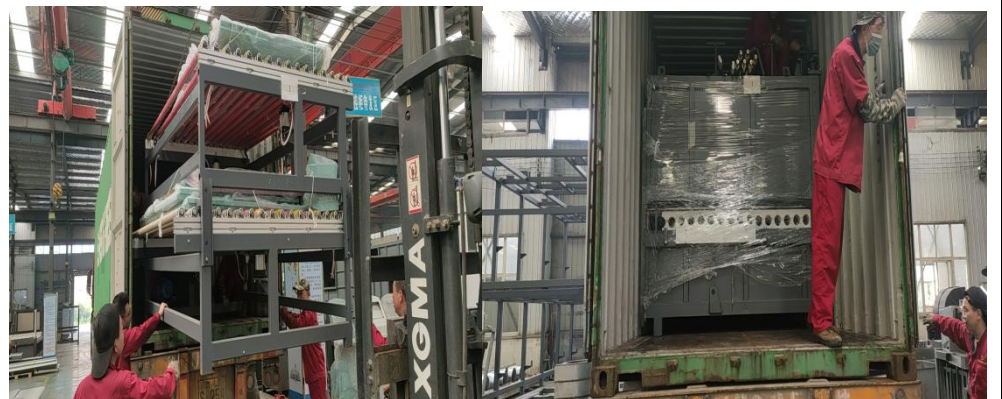
Machine total photos :
Blower on top of the
machine body:



Blower besides the machine
body:



Machine Delivery



Main configurations for Mechanical & Electrical Components

TEL NO: 06-7433909, P.O. BOX: 15442, AL JURF 1, AJMAN – U.A.E.

E MAIL: sangeo.george@gmail.com, enquires@sangeogroup.com, Web: www.sangeogroup.com

1. Mechanical Components

No.	Items	Brands
1	Ceramic roller	Huayan
2	Ceramic roller drive belt	Shanghai
3	Insulating material (high aluminum insulating board)	Luoyang
4	Fiber rope	Shanghai
5	Blower	Wendeng
6	Cycloidal reducer	Guomao
7	Turbine worm reducer	Guomao
8	Pneumatic element	Sazn , Airtac
9	Shuttle valve	Zhejiang
10	Connector	Zhejiang
11	Solenoid valve	Zhejiang
12	Bearings	Harbin, Luoyang , Wafang dian
13	Type steel	Wuhan Iron& Steel plant
14	Heaters	Capital Iron& Steel plant
15	Ceramic tubes for heaters and themocouple	Shandong
16	Steel rollers	Shandong
17	Rubber rollers	Zhejiang
18	Chain and articulated chains	Jiangsu
19	Screws and nuts	Luoyang
20	Drive Sprocket	Luoyang
21	Universal Wheel	Zhejiang
22	Convection fans	Jiangsu
23	Fireproof airduct	Anhui
24	Aluminum profile	Luoyang
25	Fan flexible connection	Luoyang
26	Flexible connection of air box	Luoyang

2. Electrical Components

No.	English Name	Brands
1	power module	Siemens, Germany
2	PLC	Siemens, Germany
3	Communication board	Siemens, Germany
4	I/o extension module	Siemens, Germany
5	Output extension module	Siemens, Germany
6	Analog output	Siemens, Germany
7.1	frequency converter	Inovance,China
7.2	Transmission frequency converter	Schneider,Germany
8	Solid state relay	Gute,Wuxi,China
9	fuse	Mingrong,Zhejiang
10	Fuse base	Mingrong,Zhejiang
11	Temperature measuring module	Hongge,Taiwan
12	Switching power supply	Schneider,Germany

13	encoder	BANNER,USA
14	Proximity switch	Bedook
15	temperature-controlled meter	WINPARK
16	pressure transmitter	Fred
17	optoelectronic switch	BANNER,USA
18	button	Schneider
19	Motor protection circuit breaker	Schneider
20	Scram knob	Schneider
21	2 gear knob	Schneider
22	Contact base	Schneider
23	breaker	Schneider
24	auxiliary contact	Schneider
25	Ac contactor	Schneider
26	Intermediate relay	Weidmuller
27	Intermediate relay base	Weidmuller
28	Industrial PC	Siemens,Germany
29	display	PHILIPS
30	Mouse Keyboard	Duble Swallow

Machine Free Spare Parts

Free Spare Parts					
No.	Name	Specification	Unit	Qty	Note
Heating Section					
1	Porcelain tube for wires out of used		PCS	10	
2	Upper and down Furnace wires ceramic tiles		PCS	4	
3	T-tube for furnace heating wire		PCS	8	
4	T-tube for furnace thermocouple		PCS	4	
5	Upper heating wire		PCS	8	
6	Down heating wire		PCS	8	
7	Drive driving end bearing		PCS	4	
8	Drive driving end bearing		PCS	4	
9	Chain for Coupling		M	4	
10	Air Tube		M	10	
11	Air Tube		M	10	
12	Round belt		PCS	10	
13	Throttle valve		PCS	4	
14	Through outside screw		PCS	4	
15	Copper wiring column		PCS	8	

16	Surface hardening adhesive		KG	10	
17	Solenoid valves		PCS	4	
18	Ceramic Rollers		PCS	2	
Flat Quench section					
1	Kevlar rope	3×10	M	150	
2	Drive driving end bearing		PCS	4	
3	Drive passive end bearing		PCS	4	
4	Chain		M	4	
5	Chain for Coupling		M	4	
Electrical appliances					
1	Thermocouple		PCS	6	
2	Contactora		PCS	4	
3	Intermediate relay		PCS	4	
4	Breaker		PCS	4	
5	Breaker		PCS	4	
6	Breaker		PCS	4	
7	Indicator light		PCS	4	
8	Indicator light		PCS	4	
9	Button		PCS	8	
10	Button		PCS	8	
11	Fuse		PCS	8	
12	Fuse		PCS	8	
12	SSR		PCS	6	
14	Fast fuse		PCS	12	
15	Fuse holder		PCS	4	
16	Heating wire terminal		PCS	10	
17	Proximity switch		PCS	4	
18	Travel switch		PCS	4	
19	Tool		SET	1	

Thanks and Best Regards!