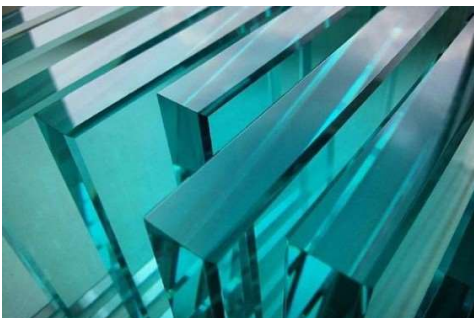


Detailed Configuration for CGZ9325-45° GLASS FLAT EDGER AND VARIABLE MITER MACHINE WITH 9 MOTORS



Processed effect



Description:

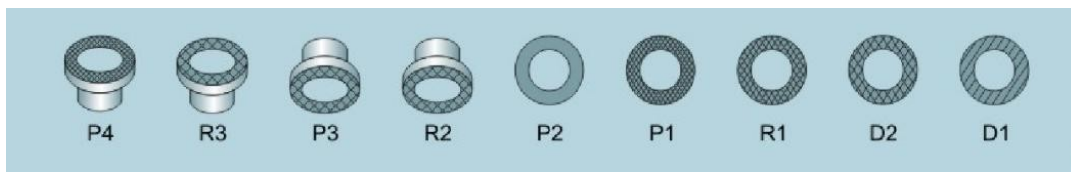
- CGZ9325-45° is suitable for grinding flat glass with arris, variable angle and 45° edging. 5 motors from front beam can adjustable 0~45° and as a whole to move in /out to achieve angle adjustment.
- Coarse grinding, fine grinding, polishing and chamfering can be completed in one time.
- The base, front and rear beams, beds and grinding heads are of casting materials (annealed to prevent deformation), Which can bear large loads and has stable performance.
- With reasonable design, and high precision processing, It is the best glass grinding equipment for processing the mass production of craft glass, home appliances glass, decoration and furniture glass, doors and architecture glass.

Main technical data:

Max.Glass size	2500×2500mm
Min.Glass size	80×80mm
Glass thickness	3-25mm
Transmission speed	0.5-5m/min
Bevel angle	0-45°
Max.hemline grinding	3mm
Max. arris grinding	2.5mm
Power	21KW
Weight	3500kg

Land occupation	7800×1000×2500mm
glass diagonal error	≤0.5mm/m
glass parallelism error	≤0.3mm/m

CGZ9325P-45° Wheels placement



NO	Features	Motor brand	Power	Speed	wheels	Spec(mm)
1#	Rough grinding for bottom	SUNKO N	2.2KW	2800rpm	Diamond wheel	Φ150×12 100 mesh
2#	Rough grinding for bottom	SUNKO N	2.2KW	2800rpm	Diamond wheel	Φ150×12 240 mesh
3#	Fine grinding for bottom	SUNKO N	2.2KW	2800rpm	Resin wheel	Φ150×12 240 mesh
4#	Polishing for bottom	SUNKO N	2.2KW	2800rpm	10S40	Φ150
5#	Polishing for bottom	SUNKO N	1.5KW	1400rpm	SD001	Φ150
6#	Grinding for front arris	SUNKO N	1.5KW	2800rpm	Resin wheel	Φ130×12 240 mesh
7#	Polishing for front arris	SUNKO N	1.5KW	2800rpm	10S40	Φ130

8#	Grinding for back arris	SUNKO N	1.5KW	2800rpm	Resin wheel	Φ130×12 240 mesh
9#	Polishing for back arris	SUNKO N	1.5KW	2800rpm	10S40	Φ130

Main Structure Parts



Adopt the **frequency inverter** to ensure keep the machine more stable while processing the heavy and overload size glass.



Adopt the famous brand "**QIANGZHU**" gear box to make the machine more stable.



The beam, base and grinding head base are annealed, which is thick and strong.



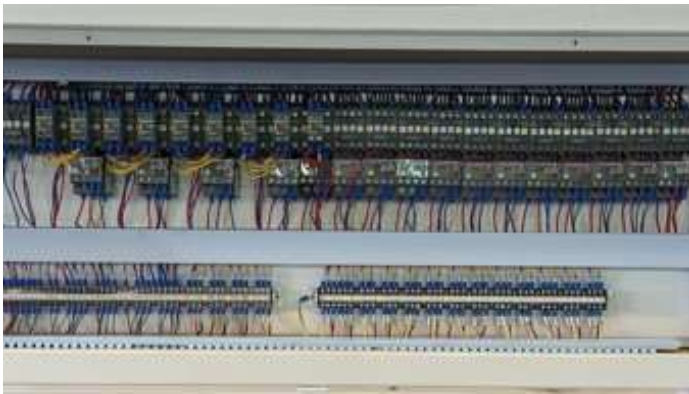
Adopt the **encoder** to induce the glass thickness and show on the digital display.



Adopt the **big and strong gears** to make it durable for use, running more stable.



Adopt SUNKON special motor for grinding motors, durable and reliable for use.



Adopt the **ABB** electric with neat line layout which make the machine more safety and running smoothly.



Digital display to show the glass thickness and angle. Speed is easy frequency control.



Lubricating system with oil pump to keep spindles always in lubrication state, better for maintenance.



The front beam is hanging with 7 motors. A strong pillar in middle to make sure front beam indeformable even with heavy bearing.



Adopt the **high quality timing belt** to convey the glass, which has longer service life and more accurate.



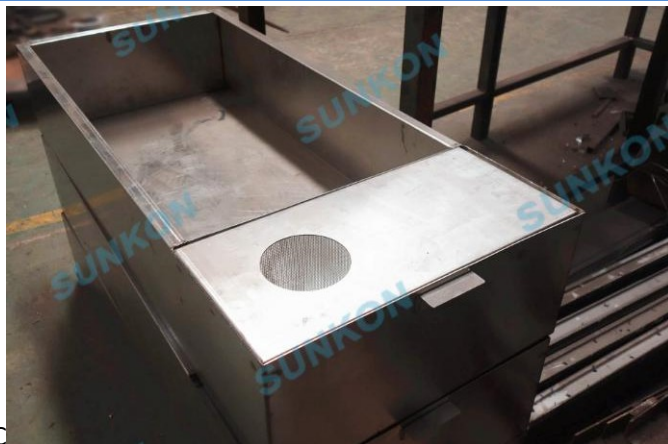
Adopt **"LONGXIA"** brand which uses a higher proportion of PVC material, make the pads more durable.



We adopt **aluminum fluency strips** instead of iron frame that brings the glass transmission more stable, durable and looks more beautiful.



Adopt the **overall lifting system** for input guide rail, which is easier to adjust as different thickness of glass, makes the procession is more accurate.



Adopt of **quality stainless steel water tank** which is corrosion resistant and more durable.



Adopt PVC water pipe to make sure smooth water circulation.

The configuration brand of Major parts and the feature

(Some configuration brands may be replaced due to products improvement without notify and Sunkon will have the right of final explanation.)

Electric Parts:			
NO.	name		Configuration date
1	AC contactor	Supplier	ABB Electric
		Model	CJX2-0901/CJX2-0910
2	Overload relay	Supplier	ABB Electric
		Model	JRS1-09-25/Z
3	Transformer	Supplier	CHINT Electric
		Model	NDK(BK)-250
4	Circuit breaker	Supplier	ABB Electric
		Model	NM10-100/330 DZ-47/60
5	Ammeter/Voltmeter	Supplier	CHINT electric
		Model	6L2-A 6L2-C
6	Button/light	Supplier	Shanghai Electric

S.N.	Name		Configuration date
1	The material of the machine and frame	Material	Cast Iron with annealing treatment
		Model No.	HT250
		Thickness	Pedestal 25mm、 front & rear crossbeam 30mm、 upright post 20mm
2	Grinding motors	Supplier	SUNKON motor
		Model No.	YSM90L-2-2.2kw/YSM90S-2-1.5kw
3	Step-less reducer	Supplier	XG-TRANSMISSION Manufacture
		Model No.	JWB-X2.2-80FS
4	Worm reducer	Supplier	ZHUJIANG REDUCTION Manufacture
		Model No.	WPR0010-110
5	Transmission pads	Supplier	Foshan Shunde Zhenhong Plastic Factory
		Model No.	004# front pads series, 008# rear pads series
6	Transmission train	Supplier	Hangzhou Donghua Chain Group Co.,Ltd.
		Model No.	
7	Gears	Supplier	Foshan Shunde Zhongmin Gear Co.,Ltd
		Model No.	6-15Z 6-17Z two 6-22Z
8	Bearing	Supplier	Harbin Bearing Group Corp.
		Model No.	P204/F204/6203/6206/6008/51102/51105



SUNKON IN EXHIBITION

